



Te Rapa Primary School

An effective, quality full primary school (NE – Yr 8)

Principal

Mr Vaughan Franklin

Deputy Principal

Mrs Christine Troon

www.terapa.school.nz

Head of Junior School

Mrs Jane Franklin

Head of Senior School

Mrs Abby Ritete

BOT Chairperson

Mr Shaun Hoskin

Newsletter

Thursday 18th June 2020

School Student Roll : 547

Currently Operating Under Alert Level 1 Procedures.....

WHAT'S HOT

Getting to Alert Level 1 Yahoo !!

Welcome back Mrs Brinsden – Term 3

Arbor Day - Kauri & Syndicate Tree Plantings

WHAT'S NOT

Farewell (& Thanks) to Mrs Poland and Mrs Turner

Ashurst Park Playing Field Repairs Delayed

Winter is Coming ... so let's wrap up and stay warm.

Farewell Mrs Virginia Poland Resignation / Retirement

Mrs Virginia Poland has been on our teaching staff for approx. 17 years, and she has decided to resign / retire from her teaching role at Te Rapa Primary School and join her husband Pat (who retired 18+ months ago). They plan to spend more time with their family. It is with regret that our school will say "goodbye" to Mrs Poland. She has been an asset to our Junior Syndicate Team, and in particular our New Entrant programme where she taught in Room 1 for most of her career at Te Rapa. We wish Mrs Poland all our very best.

Welcome Back Mrs Paula Brinsden

Our Assistant Principal #2 (Head of Senior School) **Mrs Paula Brinsden** is scheduled to return from 12 months maternity leave. She will start in her leadership position again at the beginning of Term 3 2020.

Thank You Mrs Ritete and Thank You Miss Curtis

Mrs Abby Ritete has been the Acting "Assistant Principal #2" for the period Mrs Brinsden has been on Maternity Leave. This was a Fixed Term position and it concludes at the end of Term 2 2020. Mrs Ritete returns to teach full-time in Room 15 beginning Term 3 2020. She will also return to her leadership role as our Year 5 & 6 Syndicate Team Leader.

Miss Trudie Curtis has been Acting in the Year 5 & 6 Team Leader role for the period Mrs Ritete was covering for Mrs Brinsden. She continues to teach in Room 14 (no change), but will return to her "Lead Teacher" position beginning Term 3 2020.

Farewell and "Thank You" Mrs Turner

Mrs Tania Turner was appointed to teach full-time in Room 15 for the period Mrs Abby Ritete was Acting "Assistant Principal #2". This was a 12 month Fixed Term teaching position on staff. The role comes to an end with Mrs Paula Brinsden returning from maternity leave. We are certainly grateful for the job Mrs Turner has done in Room 15, and together we will collectively say "Thank You Mrs Turner" at the end of this Term.

Parent – Teacher Conferences

Wednesday 1st July and Thursday 2nd July

Teachers will host parents / carers for conferences only once this year, with the April Conferences (cancelled due to COVID-19) now merging into the Mid-Year Conferences which are scheduled for Week 12 Term 2 (later this Term). The mid-year conferences are a key part of Te Rapa Primary's reporting programme. Deputy Principal – Mrs Christine Troon has invited parents / carers to book their Conference(s) on-line. Teachers will share progress and achievement data on how students are tracking / progressing and together with parents they will discuss goals for students too. On the back of the COVID-19 lockdown period they will also discuss with parents / carers how each child is coping (well-being) and how they are placed to move forward now we have re-started school and we have re-connected with each other. We hope to continue growing and developing an effective home - school partnership with parents / carers too, and by working together we can assist each student individually. Our aim is to get all stakeholders involved to help each child. Teachers will also outline any special programmes that we have re-scheduled to operate this year, and will clarify how Terms 3 and 4 2020 might look like going forward.

Mid-Year Conferences will aim to...

- build on the *positive home – school partnership* and to further foster and enhance a child's learning progress and development
- discuss how your child has coped and re-adapted to school after the COVID-19 lockdown period (student well-being)
- discuss and set goals for Terms 3 & 4 following assessments and teacher professional judgements
- look at a child's attitude to their learning, and to strengthen their individual effort to seek personal improvement(s)
- discuss / identify the next Te Rapa HEART focus / leadership skill a child might need to become even better

REMINDER – Early Finish to the School Day

Wednesday 1st July and Thursday 2nd July

Children will be dismissed for the day at 2.00pm on these 2 x 'parent-teacher conference' afternoons. The 2pm finish allows staff to carry out after-school duty requirements and ready themselves and their classrooms for their first Conference at 3pm (both days).

Ashurst Park Playing Fields

We are told that the repairs to the HCC playing fields have been delayed. We are waiting for an update from the Hamilton City Council.

Arbor Day 2020**COVID-19 Tree Planting****Recognising our School and our School Community**

On Friday 5th June (Arbor Day) our eldest and youngest students planted a Kauri Tree beside our Native Garden area to signal our strength as a school community getting through COVID-19. Each syndicate team also planted their own native tree in our school's Native Garden too.

The plaque beside the Kauri Tree reads

TE RAPA PRIMARY SCHOOL

A caring community School

ARBOR DAY 2020

This mighty Kauri tree is a signal of our school's strength and team work.

Planted on Friday June 5th 2020 to acknowledge our school and community who successfully navigated our way through COVID-19.

Our collective thanks to Mrs Jane Franklin (Asst Principal #1) who initiated and lead the idea, and to Mrs Ana Williams-Cate (Gardens & Grounds) and Mr Ashley Turner (Caretaker) for their excellent organisation. The 5 x new trees are now all in and they look really good.

Anti-Bullying Approach

Te Rapa Primary School has continued to highlight that students should not be victims of bullying at any time. If they are unhappy they must speak out and share the situation with the adults in their lives eg. school staff and parents. We know that bullying will happen in every school, so Te Rapa staff continue to work hard at a classroom and playground level to reduce / eliminate all forms of bullying where we can. Teachers, Support Staff and also our Pastoral Care Team make themselves available to support our students and intervene. We also realise that the effects of bullying are not always visible either, so we are on the look-out for signs. Our aim is to constantly draw attention to the topic of **"anti-bullying"**, and by building the social / emotional intelligence of our school population through **Te Rapa HEART (PB4L)** we are helping everyone learn to be a 'better person'. These approaches encourage our students to talk with their teachers and / or other staff so we can get involved. Please remember **bullying is when a child is made unhappy by another over time** eg. teasing, hurting or perhaps being excluded, but it is **over time**. **We don't use the term bullying for a one off incident** where there is a "mean moment" with one person choosing an opportunity to be mean to another. Note - We respond to the **mean moments** too if we know about them.

Please remind your son / daughter to tell you what has happened to them, but they must also tell their teacher at school too (immediately). This way we can move swiftly to support them ... and we certainly will, because if we know about it we can provide prompt intervention and support.

FUTURE Enrolments – This Year & Beyond Predictions – Please help us ...**Enrolments for 2020 – 2022 (and beyond)**

Established Te Rapa parents - if you have pre-school children at home please inform office staff NOW if your child is coming to Te Rapa this year or in 2021 or beyond. Do you know of **parents** living in-zone intending on enrolling their pre-school child(ren) at Te Rapa in the future ? If so please ask them to contact us **urgently**. **NOTE** – Interested families living out-of-zone and looking to enrol a 5yr old should also contact us.

Student Charges 2020

School Fees / Donation are "Gone" this year Annual Paper Levy is "Gone" this year too

This year we have moved swiftly to scrap the \$50pp "school fees / donation" that we had previously expected in the past for each Te Rapa child. We also scrapped the \$10pp "paper levy" too. Immediately a family with 1 x child at Te Rapa saves \$60 per child. This saving obviously increases for a family who have 2, 3 or more children attending our school. This is an immediate saving to our school families, because these 2 x payments to our school are not coming out of your family budget. This is great news for all of our Te Rapa families.

\$150 per pupil Govt Grant

To make things even better for our Te Rapa families our school opted into the Government Grant scheme for 2020 because we wanted to make sure that every Te Rapa student attending our school at the start of 2020 ...

(a) didn't have to pay the \$60pp outlined above, and

(b) could benefit from a Govt subsidy of up to \$150pp.

This move ensured the financial gain to our families increased, and the \$\$ demand on Te Rapa families dramatically reduced for this year.

Existing Programmes

In previous years the school had budgeted the \$60pp outlined above as annual income, but with this stopping in 2020 and us opting into the \$150pp Govt Grant scheme we have enjoyed a nett income gain of \$90pp. This funding gain is now being used to help subsidise student participation in existing established Te Rapa Primary School programmes. Note - The funds are not designed to help fund new programmes.

Trial Year 2020

This is our first year with this Govt Grant, so it is a trial, and wherever we can we have budgeted to use a generous portion of the funds to help reduce the cost to parents / carers, and where possible we have not asked parents / carers to pay anything at all. There are lots of specific annual charges associated with your child's schooling that are not curriculum based. These are fun non-curricula events and there will be a parent \$\$ contribution required (in part or in full) for some of these school events eg. Big Day Out, Sports Camps, School Camps or similar.

Parent Contributions

As a school we are determined to make sure your family contribution this year will be significantly less than it was in 2019. If you have 2 or more children at our school, then you are saving even more compared to your \$\$ contribution last year. We have continued to adhere strictly to our normal Te Rapa Primary School programmes for 2020 and our aim is to use the \$150pp to reduce the \$\$ contribution each family makes to events your child(ren) participates in.

School Camps – Costs Going Forward

Te Rapa recognises that costings to go to certain Camp venues have increased. Transport, accommodation, food, specialist tutors all cost a little more, so for 2021 and beyond we are reviewing where we go and how much it will cost. Our aim is to find some common ground between what is a “preferred traditional Te Rapa camp venue” and the increasing \$\$ costs it takes to get us there. For the record ... we have been reviewing Camp venues and carefully considering \$\$ calculations for our Camps for years and years, and those well-established Te Rapa families will recall our trips to Wellington in the past where we took 4 or 5 x classes of students to the Capital for a week, or 5 x classes to Taupo / Turangi for 5 x days to Snow Camp. Sadly increased costs saw these traditional Te Rapa School Camps removed from our school's programme. We are always looking to be frugal where we can, without compromising health & safety, and we try to choose a popular quality camp venue with a well-designed high appeal programme. Out Camps are hugely popular with students too so we want them to continue.

2021- 2022

Our Camps for this year and potentially 2021 are now set because we must book venues etc some 18 -24 months ahead. We are however constantly evaluating what we do, where we go and how much these adventures will cost for our students / families.

Camp Contribution 2020

We regularly remind our parents / carers to put a little (\$\$) away so you can fund your child's participation in these specialist EOTC events each year. I am also pleased parents / carers anticipate these Camp events as your children get older and start to move through our school. As students get into Year 3 & 4 the opportunities for an overnight “camp” experience begins. Then each year through to Year 8.

Please Note - Notices are out soon for 2020 Motutapu Island Camp (Yr 7 & 8). Then a notice regarding our Sports Camp “Plan B” alternative. Early Term 4 a notice for the Yr 3 / 4 Syndicate event in December follows which includes the Yr 4 overnighter, and in November this year the Yr 5 & 6 Team will update the parents / carers of 2021 Yr 5 & 6 students around their Camp scheduled for very early in Term 1 2021. There will be fundraising opportunities too so please look to participate in these to help reduce the overall costs for students / families.

Good Luck and Best Wishes to all Te Rapa Students Re-starting “Personal Interest” Events **Alert Level 1**

It is really pleasing to know that lots of our Te Rapa students are about to actively participate again in personal interest events after the lengthy lockdown period and the restrictions of Alert Level 2 which followed. These mid-week and weekend events eg. sports, hobbies, dance / drama / arts are important to help children get back into routine, so we “thank” those parents / carers who are able to register your child(ren) in a team, a programme or something similar because these opportunities assist your children to re-adjust to “normal” life after COVID-19.

Te Rapa Primary School Hosting Japanese Students 2020

Each year we consult with Ritsumeikan Keisho Junior High School from Japan re. international student visitors to our school. Understandably the visits for this year have been cancelled. We hope to have multiple visits next year.

Office Hours 2020 **REMINDER**

Our school administration staff at Te Rapa Primary are employed **8am – 4pm daily**, so please remember that these are also our school office hours too. Note - our office is not open before 8am or after 4pm, and phone calls to the school need to be made between 8am - 4pm too.

School Year Dates for Remainder of 2020

Term 2 Last Day – is Friday 3rd July
Term 3 Tuesday 21st July - Friday 25th September (**Teacher Only Day – Monday 20th July**)
Term 4 Monday 12th October - Friday 18th December (**Last Day for 2020 School Year**)

Lost Property

Naming your children's clothing means lost items can be easily returned to the owner.

Teacher Only Day – Day #1 Next Term - No School for Students on Monday 20th July 2020 (Students start on Tuesday 21st July)

Winter is Coming ! **Measles & Flu ALERT** – Visit your Dr if your children are unwell. **Sick Students – Should not be at School**

Photo Day – Tuesday 23rd June **Masterpiece Photography (Cambridge)**

Masterpiece Photography are here next week Tues. 23rd June for class & individual photos.

NO RIGHT TURN : Turn left ONLY

When exiting our school driveway at 3pm.

HELP PLEASE **NO Students at School Before 8.15am**

HEALTH & SAFETY Parents PLEASE HELP US and **do not have your children arriving at school before 8.15am.**

Scooters and Bikes “Locked Up” at School **Security**

Please don't allow your child to bring a scooter or bike to school unless they have a good lock system to secure it to the racks provided.

Locking Carpark Chains

Reminder – if you are at school coaching / mentoring a team and you are parking your vehicle in a school carpark ... then you will need to lock-up the car park chain on departure please if you are the last car out of the car park. ***Thanks for your help with this request.***

Relief Teacher Shortage

Do you know any teachers who might be available for ‘relieving’ work at Te Rapa Primary ?

If so please ask them to email Mrs Abby Ritete (Assistant Principal #2) at aritete@terapa.school.nz to share their name and details.

Thank you for your continued support of Te Rapa Primary Waikato Top School 2006, 2008, 2009, 2010, 2012, 2013, 2015, 2016, 2017, 2018 & 2019
 a full primary school where ***“everyone knows your child's name”***

V W Franklin (Principal) and Staff

CONFERENCES : Wednesday 1st July and Thursday 2nd July 2020

REMINDER: Bookings are now open. Thank you to those who have already booked.

What to do:

Go to this address: www.schoolinterviews.co.nz

Click on the link 'MAKE A BOOKING'— at the top right of your screen.

Enter this code: **nnh89** and then you will be guided through the booking process.

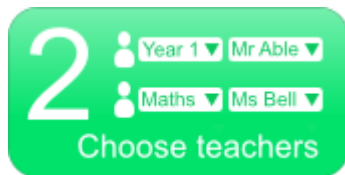
Booking conferences is as easy as 1 - 2 - 3:



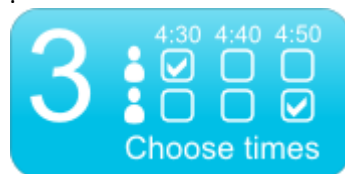
First enter your email address and full name of who is coming to the conference/s

Then enter the FULL NAME/S of the child/ children the conferences are for.

It is important to include the last name (surname) too so that children can be clearly identified.



On the next page, choose the teachers you want to meet with.



Then you will see a timetable showing when your chosen teachers are available.

Simply click on the times that suit you.

When you are finished making the booking/s, your conference timetable will be emailed to you.

If something comes up and you want to change times, you can return to the site and change them with any that are still available.

You will receive a confirmation email to the email address you supplied.

You can also print the list of bookings if you wish.

IMPORTANT:

There is only room for one conference for each student. In the case of separated parents, we ask that you either attend together with your child or that another arrangement is made with the teacher. **Please do not attempt to book two conference time slots online for the same child as there are not enough time slots for this across the whole school.**

Why meeting is so important:

Students have the opportunity to talk about their learning in key areas of the curriculum and to share their goals. Our conferences are student-learning focused

Teachers are able to discuss progress and any areas of need, based on data from assessments and ongoing class programmes.

Parents/ Caregivers are able to form a clear picture of how their child is progressing and how home and school can work in partnership to support their child.

Christine Troon
Deputy Principal

Arbor Day 2020

This mighty Kauri tree is a signal of our school's strength and team work. Planted on Friday June 5th 2020 to acknowledge our school and community who successfully navigated our way through COVID-19.



Flippaball /Water Polo Update

As you may know, we have, in the past, performed well in the Flippaball competition in Years 4-6 and in the Water Polo competition in Year 7/8, placing highly in both competitions for a number of years. We have had a number of students gaining higher honours with Waikato Water Polo and some at national level. But recent events have caused this to fall into decline. The upgrading of the pool at Waterworld was the first catalyst for change in that it meant that all Flippaball and Water Polo events had to be re-located. The Water Polo took place at Boys High outdoor pool across the summer and the Flippaball was at Hillcrest Normal School. This became unsustainable as both pools were open to the elements. For Flippaball, the new, deeper pool at Waterworld meant that it was no longer a viable activity as the depth was now too much for our players. A relocation became necessary to a pool with available time slots, a suitable depth and a flat base. The only option became St. Peters in Cambridge. As an understandable result, parents have been more reluctant to engage in Flippaball because of the travel commitment each weekend.

For Water Polo, the transition to competitions and training at St. Peter's Cambridge also affected player numbers because of the travel commitment.

Presently, the pool at Waterworld is closed and the Water Polo competition has been cancelled. There is a hope that it may begin again in Term 3. It is also anticipated that the Flippaball competition will begin in Term 4.

All of these are subject to facilities being available, parents being willing and coaches being found.

Mike McCurry

Surplus IT Equipment

We have some IT equipment that we can no longer use in our classrooms and we want to give our families the opportunity to take something to use at home before it goes off site. These desktops will not have any software loaded.

Spec's are Intel 2160 CPU, 2 Gig Ram & 80 Gig Hard disk, 17 inch LCD.

If you are interested please come to the staff lounge on Wednesday the 24th of June between 2pm-4pm.

Please email Rob Bull if you have any questions. rbull@terapa.school.nz

Weet-bix Kids triathlon 2020

Thank you to all those that competed in the Weetbix Tryathlon in February. Te Rapa Primary School was lucky enough to be picked as the random prize winner, for the first time ever, and we received St. Peirre's Sushi vouchers. I have randomly selected names from those who took part in the Tryathlon to receive a share of these vouchers. Congratulations to the winners! **Jasmine, Thomas, Alex, Kennedy, James, Heather & Hemi.**

The Weetbix Tryathlon is all about getting kids active, improving confidence and self esteem and most of all getting out there giving it a TRY. Congratulations to all those that entered and to the parents for supporting their children. Keep an eye out for the 2021 registrations later in the year, I look forward to seeing you all again and don't forget to tell your friends how much fun it is!

Rachel Chapman (Co-ordinator).

Discos

Date: Thursday 25th June 2020

Year 0-4: 5pm-6:30pm

Year 5-8: 6:45pm-8:30pm

Theme: 'Come as you are!'

Location: MPR

Price: \$3 pre sales \$3.50 door sales

Tickets on sale in front of the MPR from

Monday the 22nd of June

Dress up in anything you want!

LOADS OF PRIZES AND GAMES

Food and Drink for sale

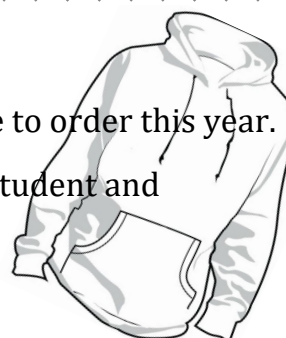


Year 8 Leavers Hoodies 2020

The highly anticipated year 8 leavers hoodies will again be available to order this year.

Order forms will be sent home next week with each year 8 student and
sample sizes will be available for students to try.

These will be in the office from week 12, term 2.



2020 Arts Performances

Now that things are getting back to normal we are able to focus on the performances coming to Te Rapa in 2020. Due to Covid-19 this may need to be an alternative line up as some travelling performers have changed their touring schedules.

We will work hard to ensure that we provide quality performances for our students to enjoy.

The purpose of these performances is for our students to appreciate other performers and their performance standard. It is to recognise talent and how these performers display stage presence and confidence. We ask them to reflect on their own experiences and to perhaps even think about how they will challenge themselves for Te Rapa's next production.

There will be no cost required from you for these performances as we are using the Government Grant which replaces school donations.



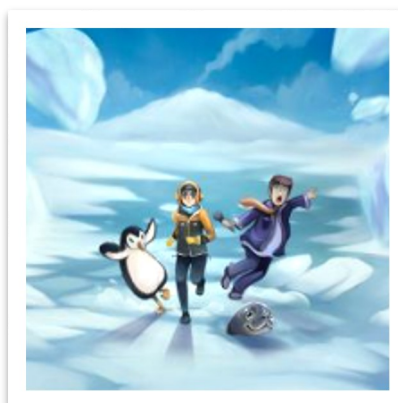
We can confirm...NZ Playhouse is going Antarctic!

The ice is melting, the icebergs are cracking up, and Nataliya finds herself in the thick of it. Encountering local wildlife along the way, the team must work together to brave the elements and fulfil their mission: saving the world from climate change.

But chances are... they might learn something about Antarctica as they go!

From the play's hilarious beginning to its satisfying and upbeat ending, this audience-interactive story will have your whole audience from age 5 to 13 laughing so hard that they won't even notice they're learning.

Coming to Te Rapa...Term 4!



Wednesday Lunches

Term 2

Hell Pizza

Wednesday 24th June

St Pierre's Sushi

Wednesday 17th June

Wednesday 1st July

Order forms will come home every Tuesday and orders need to come directly to the MPR Kitchen between 8:15-9am

The proceeds of this fundraising will go towards School

Camps for:

Year 5 & 6 in Term 1 2021

Year 7 & 8 in Term 4 2020

Thank you for supporting us!



PHOTO DAY IS COMING!



Pack 1

One copy
of 8 x 10
photo

\$21.00



Pack 2

4 copies of the
same photo
6x4 size

\$22.00

Pack 3

3 copies of the
same photo
5x7 size

\$22.00



Pack 4

8x10" Portrait Photo
5x7 Enlargement
One Postcard print
2 x Wallet size photos

\$24.00

Pack 5

Grandparents
pack.
1 x 8x10"
2 x 5x7"

\$26.00

Class Photos \$15 each



**MASTERPIECE
PHOTOGRAPHY
SCHOOL PHOTOS**

Phone: 07 823 4306

Email: masterpiece@xtra.co.nz

masterpiecephotography.co.nz

**PHOTO DAY
Te Rapa School
Tuesday 23rd June**

Free Ear Clinic Service for children (Term 3) 2020

AREA	DATE	VENUE	DROP-IN CLINIC HOURS
Hamilton clinic (by appointment)		51 Gallagher Drive, Hamilton <i>Appointments available during school holidays</i>	By appointment only Phone 07 838 3565
Hamilton mobile unit	Tuesday 21 July Tuesday 1 September	Insoll Primary School, Insoll Ave	8.30am – 10 am 2 pm - 3.30pm
	Thursday 30 July Wednesday 2 September Thursday 6 August	Melville Primary School, Ohaupo Road	8.30am – 10 am 2 pm - 3.30pm
	Thursday 6 August Wednesday 9 September	Crawshaw Primary School, Crawshaw Drive	8.30am – 10 am 2 pm - 3.30pm

Community Notices



AIR TRACK TUMBLE CLASS TE RAPA SCHOOL

Beginner & advanced classes for all year groups



Term 3

Monday 7:45-8:45a.m.
20th July - 14th Sept

\$125

for 9 weeks with a graded certificate

Book online at

www.thegymnasticacademy.com

Call Marie
for more information

0211705426

The Horsham Downs Badminton Club is up and running again, Juniors, for those aged 8 and older, will be starting on Monday July 20th. We meet at The Peak from 6 pm until 7.15pm and it costs \$40 for Term 3. We have experienced coaches and racquets are

**YOU ARE INVITED!!
2020 PROMOTION
JOIN US NOW!**
UP TO 75% Discount on all 2020 memberships for new riders

**UP TO
75% off**
ALL 2020 Licences
"New Licences only"



Club Nights
Wednesdays
from 5.15pm
MTB class
Buddy Nights

**Training
Mondays
5.30pm**

Family Sport
All Ages
Balance Bikes

LOVE TO RIDE



HAMILTON BMX CLUB

Email: hamiltonbmx@xtra.co.nz
Website: www.hamiltonbmx.co.nz
Facebook Page or Phone: 027 2733169

KIDS SPEAK OUT!

**SPEAK4
SUCCESS**

No Confidence – School speeches – Bullies – a NIGHTMARE?

After School Classes: Kids gain real life skills & have fun!

LEADERSHIP: Sch Holidays 1-4 days with Certificate - Age 10+

CHALLENGES: Sch Holidays Coping with life challenges - Age

10+. HIGH SCHOOL Aargh – 1 day, Rules, Study skills,

Interviews Yr 8. RING Roz 027 248 2888

www.speak4success.co.nz

Community Notices

MULTI-SPORT HOLIDAY PROGRAMME

July 2020

MONDAY 6TH	VOLLEYBALL
TUESDAY 7TH	NETBALL
WEDNESDAY 8TH	ULTIMATE FRISBEE
THURSDAY 9TH	RIPPA RUGBY
FRIDAY 10TH	FUTSAL
MONDAY 13TH	NETBALL
TUESDAY 14TH	FUTSAL
WEDNESDAY 15TH	RIPPA RUGBY
THURSDAY 16TH	ULTIMATE FRISBEE
FRIDAY 17TH	VOLLEYBALL

www.netballhamilton.org.nz

HAMILTON CITY
**NETBALL
CENTRE**

9am to 3pm

\$30 per day

5 years to 13 years old

Girls and Boys



5 Day Taupo Family Fun - The heart of the North Island, Taupo is a place of extraordinary natural beauty – a vast, sparkling lake, trout-filled rivers, ancient forests, steaming geothermal zones and towering snow-blanketed mountains. Discover it for yourself on this adventure-filled family holiday! **Includes:** • 4 nights accommodation at Courtney Motel in a Two Bedroom • Entry into Waitomo Glowworm Caves • Scenic Cruise to Maori Rock Carving on Lake Taupo • Admission to The Hidden Valley of Orakei Korako • 10 minute Taste of Taupo Floatplane trip • Hukafalls Jet Boat Family Pass. Price: from \$2,197 per family **Travel: 01 July to 31 March 2021 Terms and Conditions.** Package price is based on 2 adults and 2 children aged from 0-12 years. Pricing is correct at the time of submission. Blackout periods may apply. Surcharges may apply over special event periods and over school holidays. Quote package code ANZ205DTFF

PLEASE SUPPORT OUR SPONSORS THAT SUPPORT US

CDM Building Services
A division of Cedar Doors and More Ltd

ALLAN GOODGER

Phone/Fax : 07 849 8080 | **Mobile:** 027 555 7415

Email: enquires@cedardoorsandmore.co.nz

www.cdmbuildingservices.co.nz

midas
diamond jewellers
Designers



FREE Ring Cleaning & Checking In-store

- ◇ Goldsmith on the Premise
 - ◇ Remodelling & Repairs
 - ◇ Rhodium Plating on Site
 - ◇ Duty Free Service
 - ◇ Custom Jewellery Design
 - ◇ Diamond Dealers
 - ◇ In-Store Insurance Work & Valuations
 - ◇ Unique Range of Rings for all occasions
 - ◇ Watch Batteries
- Casabella Lane, 307 Barton Street, Hamilton 3204
Phone: 07- 8390039
Email: midas.jewellers@xtra.co.nz

QUALITY BOAT TRAILERS

Locally made at

43 Old Ruffell Road, Te Rapa

07 849 3158

-TRAILER PARTS

- REGALVS

VOYAGER
TRAILERS



AA Motoring

Auto Centre

**Ron
Tops**

Manager

AA Motoring Auto Centre 5 Pukete road, Te Rapa, Hamilton 3200

operated under franchise by:

D & A AUTO'S LTD

Telephone
+64 7 849 9442

Mobile

+64 27 494 0420

Website

aa.co.nz

Email

aa.auto.terapa@extra.co.nz

**CDM Fences
and Gates**

ALLAN GOODGER

Phone/Fax: 07 849 8080 | Mobile: 027 555 7415

Email: enquires@cedardoorssandmore.co.nz

www.cdmfencesandgates.co.nz

Waikato Ear Health

Now at Northcare Medical Centre, Pukete

Wednesdays

No referral required

Professional ear care by experienced NZ registered nurse
Ear Micro-examination and micro-suction (performed under
direct vision using a microscope). For removal of wax, skin,
debris and foreign objects. Adults \$48 Children (over 4yrs
old) \$38. Ph 0800777327 for appt



Selling homes throughout Hamilton

List & sell with Jo & **\$400** will
be **donated to the school**

Jo Harris
027 551 3552
joh@lodge.co.nz



Jo Harris & Co.
JOHARRIS.CO.NZ

My passion equals your results!



firstcreditunion.co.nz

Proud to support the children of Te Rapa Primary School

school banking

**first
credit union**

Not a registered bank. First Credit Union deposits are shares secured
by a first ranking registered Trust Deed. A current Product Disclosure
Statement is available.

111 COLLINGWOOD STREET, HAMILTON P 07 834 4810

Deborah Herod & Sione Taunaholo

Residential Sales

Licensed under the Real Estate Agents Act 2008

☎ 021 117 8706 / 022 095 5929

☎ 07 390 0540

@ Deborah.Herod@eves.co.nz

✉ Sione.Taunaholo@eves.co.nz

f Facebook Deborah & Sione - Real Estate

Instagram - Deborah.Herod



EVES Rototuna, 1/44 Horsham Downs Road,
Rototuna, Hamilton

EVES

Experience the quality!



**Brightlands
Childcare Centre**

562 Te Rapa Road, Hamilton

Ph 07 949 8335

info@brightlands.ac.nz

www.brightlands.ac.nz

Free 32 hours per week for over 3s

Lugtons

Corinna Findlay

Residential Sales Consultant

M. 021 024 61677

P. 07 838 3800

E. corinna.findlay@lugtons.co.nz

lugtons.co.nz



**PUKETE
NEIGHBOURHOOD
HOUSE**

YOUR LOCAL COMMUNITY CENTRE

Check out what we do at our website

www.puketehouse.org.nz

or contact us!

(07) 849 1115 | ContactUs@pukete.org.nz